



**SCOTTISHPOWER  
RENEWABLES**

# **East Anglia ONE North and East Anglia TWO Offshore Windfarms**

## **LVIA GIS Addendum**

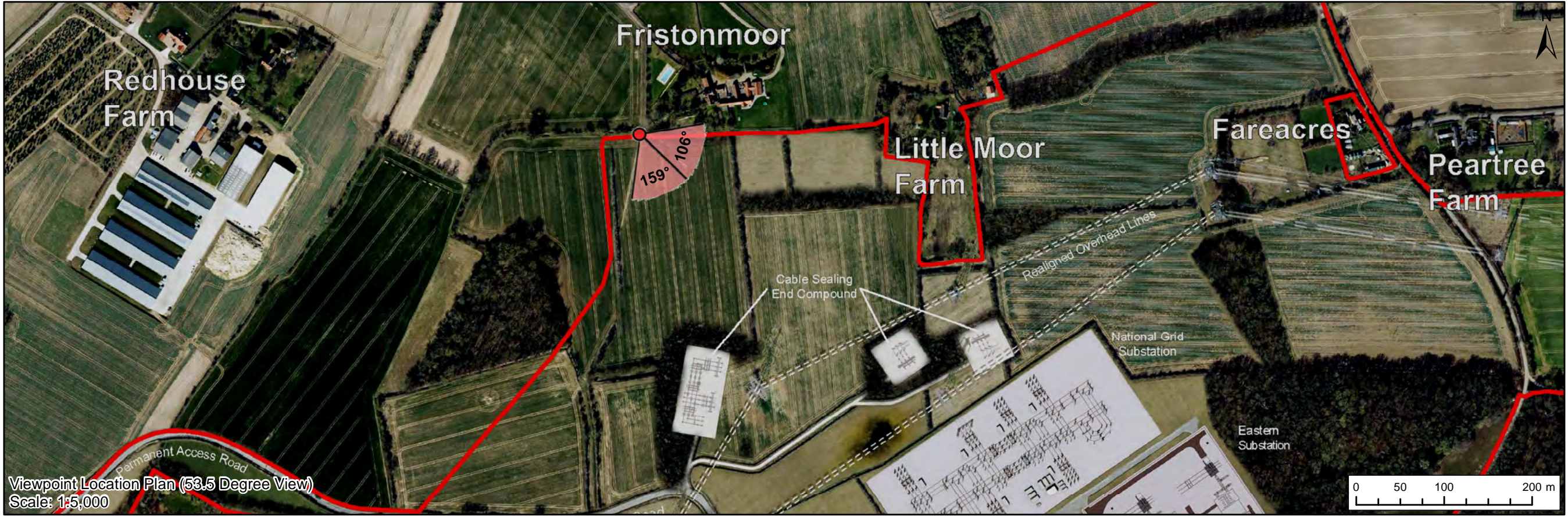
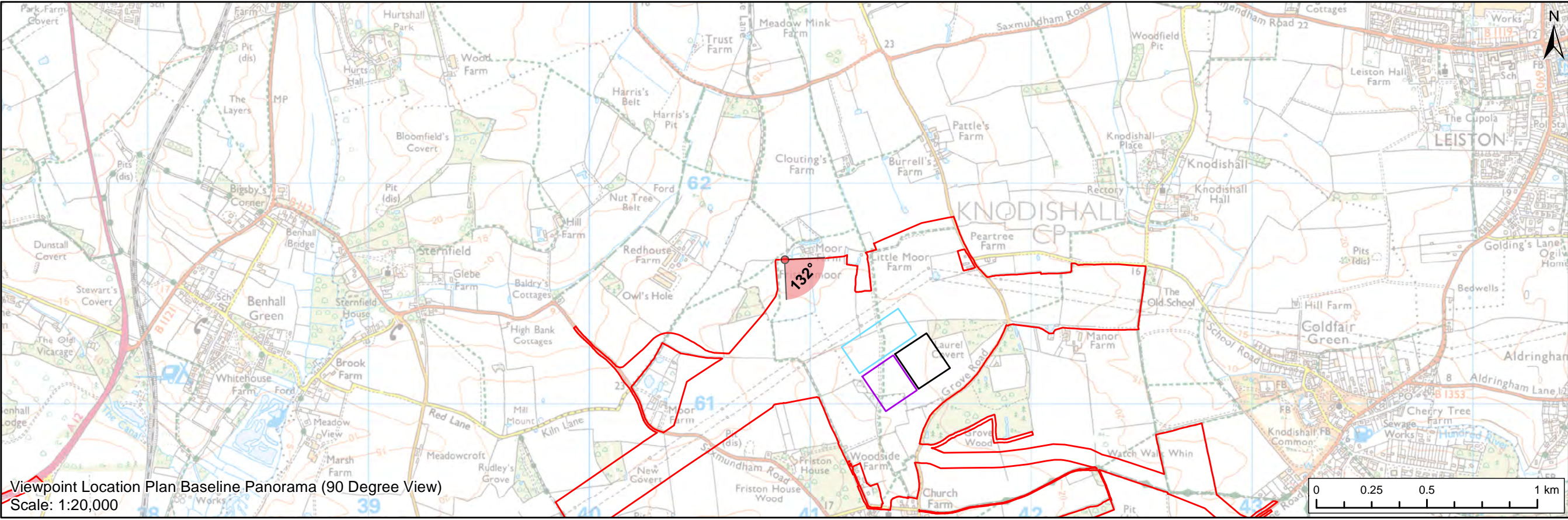
**Appendix 13 Viewpoint 5: Figure 29.17  
AIS Update: PRow near Moor Farm**

Applicants: East Anglia ONE North Limited and East Anglia TWO Limited  
Document Reference: ExA.AS-4.D11.V1\_13  
SPR Reference: EA1N\_EA2-DWF-ENV-REP-IBR-001074\_13

Date: 7<sup>th</sup> June 2021  
Revision: Version 1  
Author: Royal HaskoningDHV

**Applicable to East Anglia ONE North and East Anglia TWO**





**Legend**

- East Anglia ONE North and East Anglia TWO Onshore Development Area
- Western Substation (190m x 170m)
- Eastern Substation (190m x 170m)
- National Grid Substation

**Viewpoint:**

- 90 Degree Field of View Viewpoint
- 53.5 Degree Field of View Viewpoint



								<b>East Anglia ONE North and East Anglia TWO</b>  Viewpoint 5: Public Right of Way, near Moor Farm	<b>(Figure 29.17-Update)</b>		
	2	07/06/2021	TH	Second Issue (OPEN)	Prepared:	TH	Scale @ A3		Rev	D11	Coordinate System: BNG Datum: OSGB36
	1	13/01/2021	LA	First Issue (OPEN)	Checked:	SM	<small>Source: © Crown copyright and database rights 2020. Ordnance Survey 0100031872. This map has been produced to the latest known information at the time of issue, and has been produced for your information only. Please consult with the SPN Onshore GIS team to ensure the content is still current before using the information contained on this map. To the fullest extent permitted by law, we accept no responsibility or liability (whether in contract, tort including negligence) or otherwise in respect of any errors or omissions in the information contained in the map and shall not be liable for any loss, damage or expense caused by such errors or omissions.</small>		Date	07/06/21	
	Rev	Date	By	Comment	Approved:	LT			Figure	29.17a	





Baseline Photograph (53.5 Degree Field of View)

View flat at a comfortable arm's length

OS reference:	640884 E 261654 N	Horizontal field of view:	53.5° (planar projection)	Camera:	Canon EOS 5D Mark II
Eye level:	25 m AOD	Principal viewing distance:	812.5 mm	Lens:	50mm (Canon EF 50mm f/1.4)
Direction of view:	105.65°	Paper size:	841 x 297 mm (half A1)	Camera height:	1.5 m AGL
		Correct printed image size:	820 x 260 mm	Date and time:	22/02/2020, 13:47:28

Contains Ordnance Survey digital data © Crown copyright, All rights reserved 2020 Licence number 0100031673

Figure: 29.17a  
Viewpoint 5: Public Right of Way, near Moor Farm





Baseline Photograph (53.5 Degree Field of View)

View flat at a comfortable arm's length

OS reference:	640884 E 261654 N	Horizontal field of view:	53.5° (planar projection)	Camera:	Canon EOS 5D Mark II
Eye level:	25 m AOD	Principal viewing distance:	812.5 mm	Lens:	50mm (Canon EF 50mm f/1.4)
Direction of view:	159.15°	Paper size:	841 x 297 mm (half A1)	Camera height:	1.5 m AGL
		Correct printed image size:	820 x 260 mm	Date and time:	22/02/2020, 13:47:28

Contains Ordnance Survey digital data © Crown copyright, All rights reserved 2020 Licence number 0100031673

Figure: 29.17a  
Viewpoint 5: Public Right of Way, near Moor Farm





Visual representation of 1st year of operational phase  
Photomontage of the proposed western substation and National Grid AIS substation

View flat at a comfortable arm's length

OS reference:	640884 E 261654 N	Horizontal field of view:	53.5° (planar projection)	Camera:	Canon EOS 5D Mark II
Eye level:	25 m AOD	Principal viewing distance:	812.5 mm	Lens:	50mm (Canon EF 50mm f/1.4)
Direction of view:	105.65°	Paper size:	841 x 297 mm (half A1)	Camera height:	1.5 m AGL
		Correct printed image size:	820 x 260 mm	Date and time:	22/02/2020, 13:47:28

Contains Ordnance Survey digital data © Crown copyright, All rights reserved 2020 Licence number 0100031673

Figure: 29.17b  
Viewpoint 5: Public Right of Way, near Moor Farm





Visual representation of 1st year of operational phase  
Photomontage of the proposed western substation and National Grid AIS substation

View flat at a comfortable arm's length

OS reference:	640884 E 261654 N	Horizontal field of view:	53.5° (planar projection)	Camera:	Canon EOS 5D Mark II
Eye level:	25 m AOD	Principal viewing distance:	812.5 mm	Lens:	50mm (Canon EF 50mm f/1.4)
Direction of view:	159.15°	Paper size:	841 x 297 mm (half A1)	Camera height:	1.5 m AGL
		Correct printed image size:	820 x 260 mm	Date and time:	22/02/2020, 13:47:28

Contains Ordnance Survey digital data © Crown copyright, All rights reserved 2020 Licence number 0100031673

Figure: 29.17b  
Viewpoint 5: Public Right of Way, near Moor Farm





Visual representation of 15th year of operational phase  
Photomontage of the proposed western substation and National Grid AIS substation













Visual representation of 1st year of operational phase  
Photomontage of the proposed eastern substation and National Grid AIS substation

View flat at a comfortable arm's length

OS reference:	640884 E 261654 N	Horizontal field of view:	53.5° (planar projection)	Camera:	Canon EOS 5D Mark II
Eye level:	25 m AOD	Principal viewing distance:	812.5 mm	Lens:	50mm (Canon EF 50mm f/1.4)
Direction of view:	159.15°	Paper size:	841 x 297 mm (half A1)	Camera height:	1.5 m AGL
		Correct printed image size:	820 x 260 mm	Date and time:	22/02/2019, 13:47:28

Contains Ordnance Survey digital data © Crown copyright, All rights reserved 2020 Licence number 0100031673

Figure: 29.17b  
Viewpoint 5: Public Right of Way, near Moor Farm





Visual representation of 15th year of operational phase  
Photomontage of the proposed eastern substation and National Grid AIS substation

View flat at a comfortable arm's length

OS reference:	640884 E 261654 N	Horizontal field of view:	53.5° (planar projection)	Camera:	Canon EOS 5D Mark II
Eye level:	25 m AOD	Principal viewing distance:	812.5 mm	Lens:	50mm (Canon EF 50mm f/1.4)
Direction of view:	105.65°	Paper size:	841 x 297 mm (half A1)	Camera height:	1.5 m AGL
		Correct printed image size:	820 x 260 mm	Date and time:	22/02/2019, 13:47:28

Contains Ordnance Survey digital data © Crown copyright, All rights reserved 2020 Licence number 0100031673

Figure: 29.17c  
Viewpoint 5: Public Right of Way, near Moor Farm





Visual representation of 15th year of operational phase  
Photomontage of the proposed eastern substation and National Grid AIS substation

View flat at a comfortable arm's length

OS reference:	640884 E 261654 N	Horizontal field of view:	53.5° (planar projection)	Camera:	Canon EOS 5D Mark II
Eye level:	25 m AOD	Principal viewing distance:	812.5 mm	Lens:	50mm (Canon EF 50mm f/1.4)
Direction of view:	159.15°	Paper size:	841 x 297 mm (half A1)	Camera height:	1.5 m AGL
		Correct printed image size:	820 x 260 mm	Date and time:	22/02/2019, 13:47:28

Contains Ordnance Survey digital data © Crown copyright, All rights reserved 2020 Licence number 0100031673

Figure: 29.17c  
Viewpoint 5: Public Right of Way, near Moor Farm





Visual representation of 1st year of operational phase  
Photomontage of the proposed western substation, eastern substation and National Grid AIS substation

View flat at a comfortable arm's length





Visual representation of 1st year of operational phase  
Photomontage of the proposed western substation, eastern substation and National Grid AIS substation

View flat at a comfortable arm's length

OS reference:	640884 E 261654 N	Horizontal field of view:	53.5° (planar projection)	Camera:	Canon EOS 5D Mark II
Eye level:	25 m AOD	Principal viewing distance:	812.5 mm	Lens:	50mm (Canon EF 50mm f/1.4)
Direction of view:	159.15°	Paper size:	841 x 297 mm (half A1)	Camera height:	1.5 m AGL
		Correct printed image size:	820 x 260 mm	Date and time:	22/02/2020, 13:47:28

Contains Ordnance Survey digital data © Crown copyright, All rights reserved 2020 Licence number 0100031673

Figure: 29.17d  
Viewpoint 5: Public Right of Way, near Moor Farm





Visual representation of 15th year of operational phase  
Photomontage of the proposed western substation, eastern substation and National Grid AIS substation

View flat at a comfortable arm's length

OS reference:	640884 E 261654 N	Horizontal field of view:	53.5° (planar projection)	Camera:	Canon EOS 5D Mark II
Eye level:	25 m AOD	Principal viewing distance:	812.5 mm	Lens:	50mm (Canon EF 50mm f/1.4)
Direction of view:	105.65°	Paper size:	841 x 297 mm (half A1)	Camera height:	1.5 m AGL
		Correct printed image size:	820 x 260 mm	Date and time:	22/02/2020, 13:47:28

Contains Ordnance Survey digital data © Crown copyright, All rights reserved 2020 Licence number 0100031673

Figure: 29.17e  
Viewpoint 5: Public Right of Way, near Moor Farm





Visual representation of 15th year of operational phase  
Photomontage of the proposed western substation, eastern substation and National Grid AIS substation

View flat at a comfortable arm's length

OS reference:	640884 E 261654 N	Horizontal field of view:	53.5° (planar projection)	Camera:	Canon EOS 5D Mark II
Eye level:	25 m AOD	Principal viewing distance:	812.5 mm	Lens:	50mm (Canon EF 50mm f/1.4)
Direction of view:	159.15°	Paper size:	841 x 297 mm (half A1)	Camera height:	1.5 m AGL
		Correct printed image size:	820 x 260 mm	Date and time:	22/02/2020, 13:47:28

Contains Ordnance Survey digital data © Crown copyright, All rights reserved 2020 Licence number 0100031673

Figure: 29.17e  
Viewpoint 5: Public Right of Way, near Moor Farm









Visual representation of 15th year of operational phase  
Photomontage of the proposed western substation and National Grid AIS substation

View flat at a comfortable arm's length

OS reference:	640884 E 261654 N	Horizontal field of view:	53.5° (planar projection)	Camera:	Canon EOS 5D Mark II
Eye level:	25 m AOD	Principal viewing distance:	812.5 mm	Lens:	50mm (Canon EF 50mm f/1.4)
Direction of view:	132°	Paper size:	841 x 297 mm (half A1)	Camera height:	1.5 m AGL
		Correct printed image size:	820 x 260 mm	Date and time:	22/02/2019, 13:47:28

Contains Ordnance Survey digital data © Crown copyright, All rights reserved 2020 Licence number 0100031673

Figure: 29.17g  
Viewpoint 5: Public Right of Way, near Moor Farm





Visual representation of 1st year of operational phase  
Photomontage of the proposed eastern substation and National Grid AIS substation

View flat at a comfortable arm's length

OS reference:	640884 E 261654 N	Horizontal field of view:	53.5° (planar projection)	Camera:	Canon EOS 5D Mark II
Eye level:	25 m AOD	Principal viewing distance:	812.5 mm	Lens:	50mm (Canon EF 50mm f/1.4)
Direction of view:	132°	Paper size:	841 x 297 mm (half A1)	Camera height:	1.5 m AGL
		Correct printed image size:	820 x 260 mm	Date and time:	22/02/2019, 13:47:28

Contains Ordnance Survey digital data © Crown copyright, All rights reserved 2020 Licence number 0100031673

Figure: 29.17f  
Viewpoint 5: Public Right of Way, near Moor Farm













Visual representation of 15th year of operational phase  
Photomontage of the proposed western substation, eastern substation and National Grid AIS substation

View flat at a comfortable arm's length

OS reference:	640884 E 261654 N	Horizontal field of view:	53.5° (planar projection)	Camera:	Canon EOS 5D Mark II
Eye level:	25 m AOD	Principal viewing distance:	812.5 mm	Lens:	50mm (Canon EF 50mm f/1.4)
Direction of view:	132°	Paper size:	841 x 297 mm (half A1)	Camera height:	1.5 m AGL
		Correct printed image size:	820 x 260 mm	Date and time:	22/02/2019, 13:47:28

Contains Ordnance Survey digital data © Crown copyright, All rights reserved 2020 Licence number 0100031673

Figure: 29.17i  
Viewpoint 5: Public Right of Way, near Moor Farm